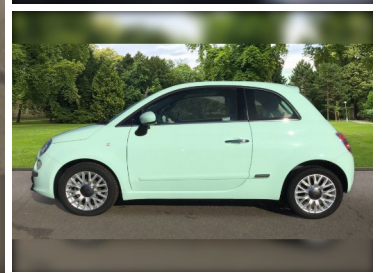


2015(15) Fiat 500 1.2 Lounge 3dr [Start Stop]

£7,495



**Engine:** Petrol  
**Body:** Hatchback  
**Gearbox:** Manual  
**Capacity:** 1242cc  
**Colour:** Green  
**Mileage:** 36,200  
**CO<sup>2</sup>:** 111g/km  
**MPG:** 58.9mpg  
**Top Speed:** 99mph  
**BHP:** 68bhp  
**Insurance Grp:** 9U

**PDH Cars Ltd**

London Road  
 Hassocks  
 West Sussex, BN6 9NZ

|   |  |
|---|--|
| 15" ALLOYS                              | BLUE & ME WITH USB PORT                    |
| DUALDRIVE PAS                           | MP3 COMPATIBLE                             |
| BODY COLOUR BUMPERS                     | RADIO/SINGLE CD PLAYER                     |
| ELECTRIC ADJUSTABLE HEATED DOOR MIRRORS | CHROME DOOR HANDLES                        |
| HEATED REAR WINDOWS WITH WASH WIPE      | ELECTRIC FRONT WINDOWS                     |
| FRONT HEADRESTS                         | HEAT INSULATED GLASS                       |
| FRONT PASSENGER UNDERSEAT BOX           | 1 PASSENGER GRAB HANDLE                    |
| ISOFIX CHILD SEAT PREPARATION           | AUXILLIARY 12V POWER SOCKET                |
| PASSENGER SUNVISOR/ILLUMINATED MIRROR   | FRONT PASSENGER SEAT MEMORY                |
| CHROME PACK - 500                       | HEIGHT ADJUSTABLE SEAT                     |
| DRIVER AND PASSENGER AIRBAGS            | HEIGHT ADJUSTABLE STEERING WHEEL           |
| SIDE AIRBAGS                            | LEATHER STEERING WHEEL WITH AUDIO CONTROLS |
|   | SEATBACK POCKETS                           |
|   | SPLIT FOLDING REAR SEAT WITH HEADRESTS     |
|   | ABS/EBD                                    |
|   | DRIVERS KNEE AIRBAG                        |
|   | ESP + ASR/MSR + HBA + HILL HOLDER          |
|   | TYRE PRESSURE MONITORING SYSTEM            |